
MEMORANDUM

CRAIG A. SMITH AND ASSOCIATES
21045 COMMERCIAL TRAIL
BOCA RATON, FL 33486
TEL (561) 314-4445
FAX (561) 314-4458

To: Bidders

From: Craig A. Smith & Associates

Date: 2/14/23

Project: Parks Renovation Project

Subject: ADDENDUM NO. 03

Bidders are required to acknowledge receipt of this ADDENDUM on Page 00410-1 of the Contract Documents and by returning the acknowledgment on Page 00490-2 of the Contract Documents to our office immediately via e-mail to villagemanager@villageofelportal.org. Failure to do so may cause the bid to be non-responsive and subject to rejection.

The Contract Documents, Specifications and Drawings are hereby amended as follows:

A. CONTRACT DOCUMENTS AND SPECIFICATIONS:

1. Attached to this addendum is CAS survey with the requested locations of the parks.
-
-

ACKNOWLEDGMENT OF RECEIPT OF ADDENDUM

I hereby acknowledge receipt of Addendum No. 03 to the Contract Documents, Specifications and Drawings (consisting of two pages with attachments) for the **VILLAGE OF EL PORTAL PARKS RENOVATION PROJECT (CAS PROJECT No. 21-2238)**.

Name of Bidder: _____
Print or type name of firm

By: _____ Title: _____
Print or type name and Title of authorized company official

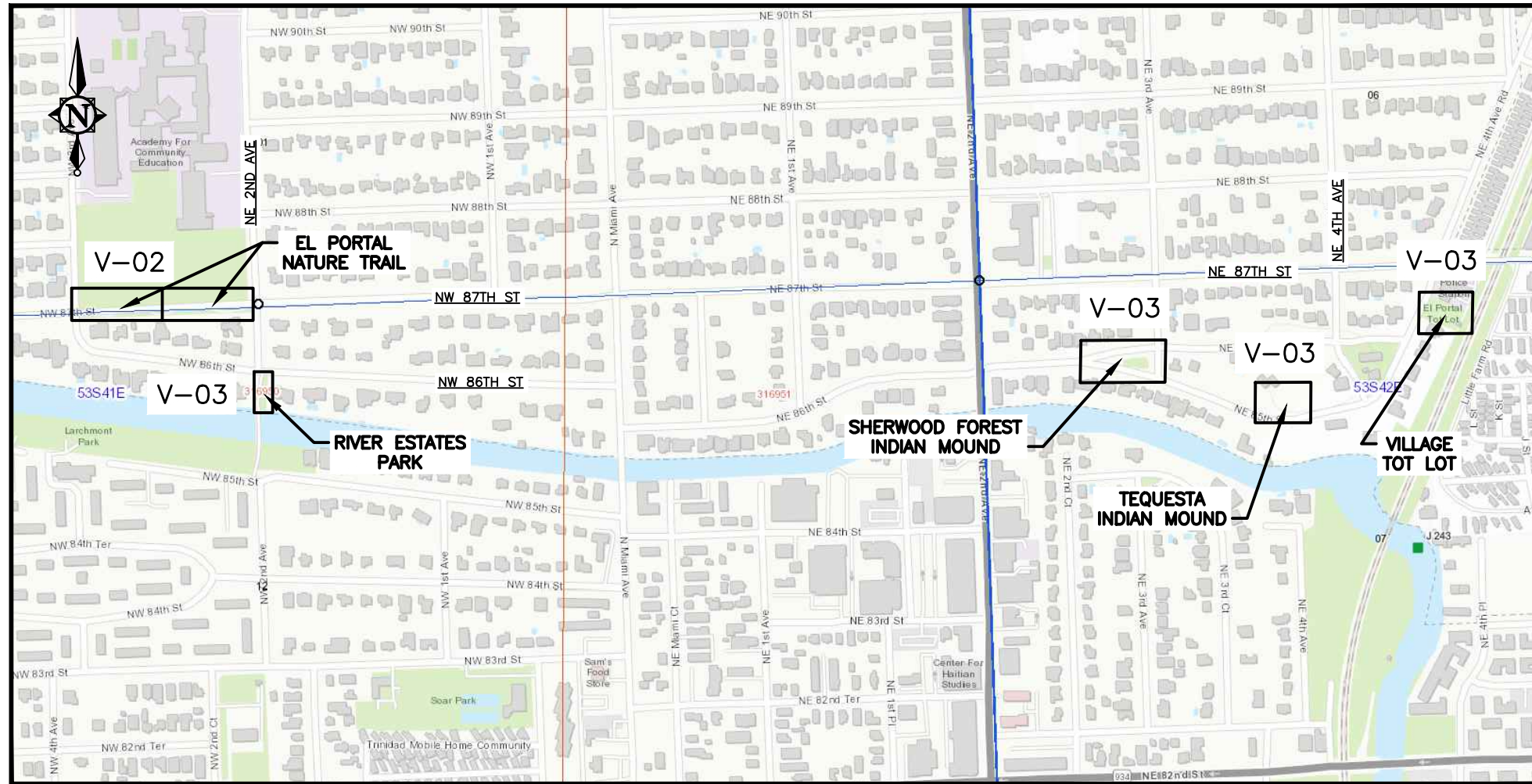
Signature: _____
Signature OF authorized company official

Date: _____, 20____

END OF SECTION

LOCATION MAP

SCALE: N.T.S.



GENERAL ABBREVIATIONS

ABRV	DESCRIPTION
CONC	CONCRETE
EP	EDGE OF PAVEMENT
H/C	HANDICAP
NTS	NOT TO SCALE
(P)	PLAT
IR&C	IRON ROD AND CAP
N&D	IRON ROD AND CAP

STANDARD LINETYPES

SYMBOL	DESCRIPTION
	LANDSCAPE LINE
	FENCE LINE
	OVERHEAD WIRE

GENERAL SYMBOL LEGEND

SYM.	DESCRIPTION
	BENCH MARK
	ELECTRIC JUNCTION BOX
	GUY WIRE
	LIGHT POLE
	WOOD UTILITY POLE
	GROUND LIGHT
	CLEAN OUT
	CATCH BASIN
	STORM DRAIN MANHOLE
	WATER METER
	BACKFLOW PREVENTOR
	FIRE HYDRANT
	WATER VALVE
	GENERIC TREE (TRG)
	OAK TREE (TRO)
	PALM TREE (TRPL)
	SIGN
	GATE POST
	TRASH CAN

SURVEYOR'S NOTES:

- REPRODUCTIONS OF THIS SURVEY ARE NOT VALID WITHOUT THE SIGNATURE AND ORIGINAL RAISED SEAL OF A FLORIDA LICENSED SURVEYOR AND MAPPER.
- NO SEARCH OF THE PUBLIC RECORDS WAS UNDERTAKEN FOR EASEMENTS, RIGHTS OF WAYS, RESTRICTIONS OR OTHER RECORDED OR EVIDENCE OF UNRECORDED DOCUMENTS BY THIS FIRM, NOR WERE ANY SUCH RECORDS SUPPLIED. PLAT INFORMATION IS SHOWN PER A LIMITED SEARCH OF MIAMI - DADE COUNTY PROPERTY APPRAISER'S WEBSITE.
- THE INTENT OF THIS "MAP OF TOPOGRAPHIC SURVEY" IS TO AID IN THE DESIGN OF AESTHETIC PARK IMPROVEMENTS WITHIN THE CORRIDORS SHOWN HEREON. PER THE CLIENT'S REQUEST, ELEVATIONS, RIGHTS OF WAYS, BOUNDARIES, ETC., WERE NOT ESTABLISHED IN THE MAKING OF THIS SURVEY. THIS IS NOT A BOUNDARY SURVEY.
- THERE MAY BE UNDERGROUND "FOOTINGS", DRAINAGE, UTILITIES, ETC. NOT SHOWN OR INDICATED HEREON.
- HORIZONTAL COORDINATES SHOWN HEREON ARE RELATIVE TO THE FLORIDA STATE PLANE COORDINATE GRID SYSTEM, EAST ZONE, NORTH AMERICAN DATUM OF 1983 (2011 ADJUSTMENT). CRAIG A. SMITH & ASSOCIATES (CAS) CONTROL POINTS (CP) WERE ESTABLISHED USING REAL TIME KINEMATIC (RTK) OBSERVATIONS AND ARE SHOWN FOR REFERENCE ONLY. THEY ARE AS FOLLOWS:
- ALL SYMBOLS ARE SHOWN FOR REPRESENTATION PURPOSES ONLY AND ARE NOT TO SCALE.
- THE ACCURACY OF THIS SURVEY IS PREMISED ON THE EXPECTED USE OF THE SURVEY. THE EXPECTED USE/PREMISE OF THIS SURVEY IS THE DESIGN OF AESTHETIC PARK IMPROVEMENTS. A TRIMBLE R6 GNSS INSTRUMENT WITH TRIMBLE TSC-3 DATA COLLECTION WAS UTILIZED TO ESTABLISH HORIZONTAL CONTROL AND LOCATE MISC. FEATURES HORIZONTALLY. A TOPCON ES-102 INSTRUMENT WITH RANGER (TDS) DATA COLLECTION WAS ALSO UTILIZED.
- THE DIGITAL DATA PROVIDED IS INTENDED TO BE VIEWED AT A SCALE OF 1" = 20' ON A STANDARD 24" X 36" SHEET.
- ALL DISTANCES SHOWN HEREON ARE IN ACCORD WITH THE UNITED STATES STANDARD USING FEET AND DECIMALS THEREOF.

SURVEY REFERENCE MONUMENTS				
CP	NORTHING	EASTING	ELEVATION	DESCRIPTION
CAS-1	553673.83	918858.60	N/A	N&D LB 3110
CAS-6	553630.57	918137.36	N/A	N&D LB 3110
CAS-7	553323.34	918829.85	N/A	IR&C LB 3110
CAS-8	553504.54	921902.51	N/A	N&D LB 3110
CAS-9	553561.35	922226.93	N/A	N&D LB 3110
CAS-10	553494.43	922051.26	N/A	N&D LB 3110
CAS-11	553758.59	923234.87	N/A	N&D LB 3110
CAS-12	553715.98	923274.05	N/A	IR&C LB 3110
CAS-13	553639.69	923311.70	N/A	IR&C LB 3110
CAS-14	553366.44	922385.59	N/A	N&D LB 3110
CAS-15	553271.09	922693.81	N/A	N&D LB 3110

SURVEYORS CERTIFICATE:

I HEREBY CERTIFY THAT THIS SURVEY IS ACCURATE TO THE BEST OF MY KNOWLEDGE AND BELIEF AND MEETS APPLICABLE SECTIONS OF THE STANDARDS OF PRACTICE AS SET FORTH BY THE FLORIDA BOARD OF PROFESSIONAL SURVEYORS AND MAPPERS IN CHAPTER 5J-17, FLORIDA ADMINISTRATIVE CODE, PURSUANT TO SECTION 472.027, FLORIDA STATUTES, SUBJECT TO QUALIFICATIONS NOTED HEREON.

FOR THE FIRM BY: _____
ROBERT D. KEENER
PROFESSIONAL SURVEYOR & MAPPER
FLORIDA REGISTRATION NO. 4846

FIELD DATE: 01/10/22

SIGNATURE DATE: _____

NO.	DATE	FB / PG	DWN	REVISION	CKD
1	01/24/22	1939/17	MRL	MAP OF TOPOGRAPHIC SURVEY	RDK

VILLAGE OF EL PORTAL

CRAIG A. SMITH & ASSOCIATES
CONSULTING ENGINEERS-PLANNERS-SURVEYORS

21045 COMMERCIAL TRAIL
BOCA RATON, FLORIDA 33486
(561) 314-4445
CERTIFICATE NO. LB0003110

MAP OF
TOPOGRAPHIC SURVEY

VILLAGE PARK PROJECTS
LEGEND

FILE NAME: 20-2238-V-01-LGND.dwg
LAST SAVED: 01/26/22 - 8:10am

CAS PROJECT NUMBER
21-2238

SHEET
V-01
OF
04

P:\Cities_Villages_Towns\El_Portal\21-2238-VILLAGE-PARKS-215\PLANS\20-2238-V-02-SRVY.dwg, Wed Jan 26 15:50:40 2022, mlavella, 1:2

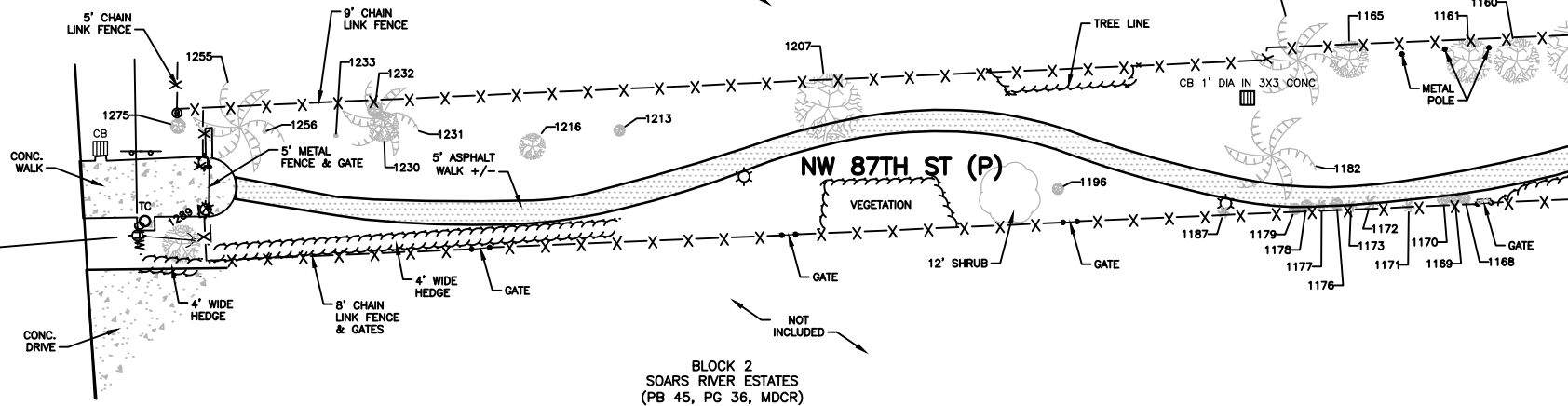
EL PORTAL NATURE TRAIL

TRACT 2
AMENDED PLAT OF MIAMI SHORES
SECTION C
(PB 35, PG 25, MDCR)

NOT INCLUDED

NW 3RD AVE

CAS 6



BLOCK 2
SOARS RIVER ESTATES
(PB 45, PG 36, MDCR)

SEE BOTTOM LEFT (THIS SHEET)
FOR CONTINUATION

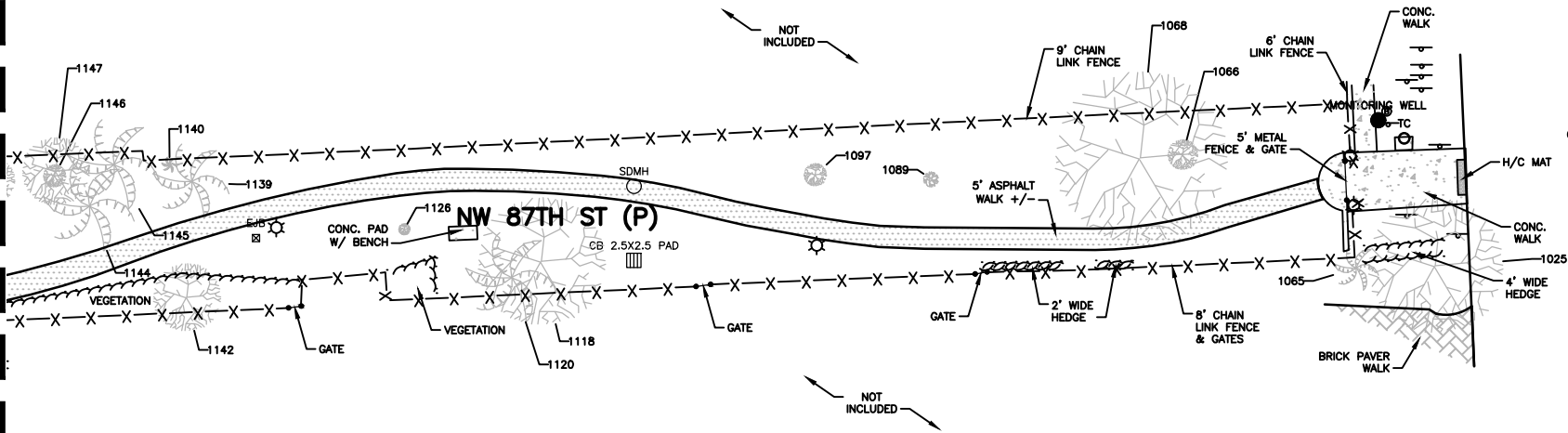
EL PORTAL NATURE TRAIL

TRACT 2
AMENDED PLAT OF MIAMI SHORES
SECTION C
(PB 35, PG 25, MDCR)

SEE TOP RIGHT (THIS SHEET)
FOR CONTINUATION

NW 2ND AVE

CAS 1



BLOCK 2
SOARS RIVER ESTATES
(PB 45, PG 36, MDCR)

NOT INCLUDED

NO.	DATE	FB / PG	DWN	REVISION	CKD
1	01/24/22	1939/17	MRL	MAP OF TOPOGRAPHIC SURVEY	RDK

PREPARED FOR
VILLAGE OF EL PORTAL

CRAIG A. SMITH & ASSOCIATES
CONSULTING ENGINEERS-PLANNERS-SURVEYORS
21045 COMMERCIAL TRAIL
BOCA RATON, FLORIDA 33486
(561) 314-4445
CERTIFICATE NO. LB0003110

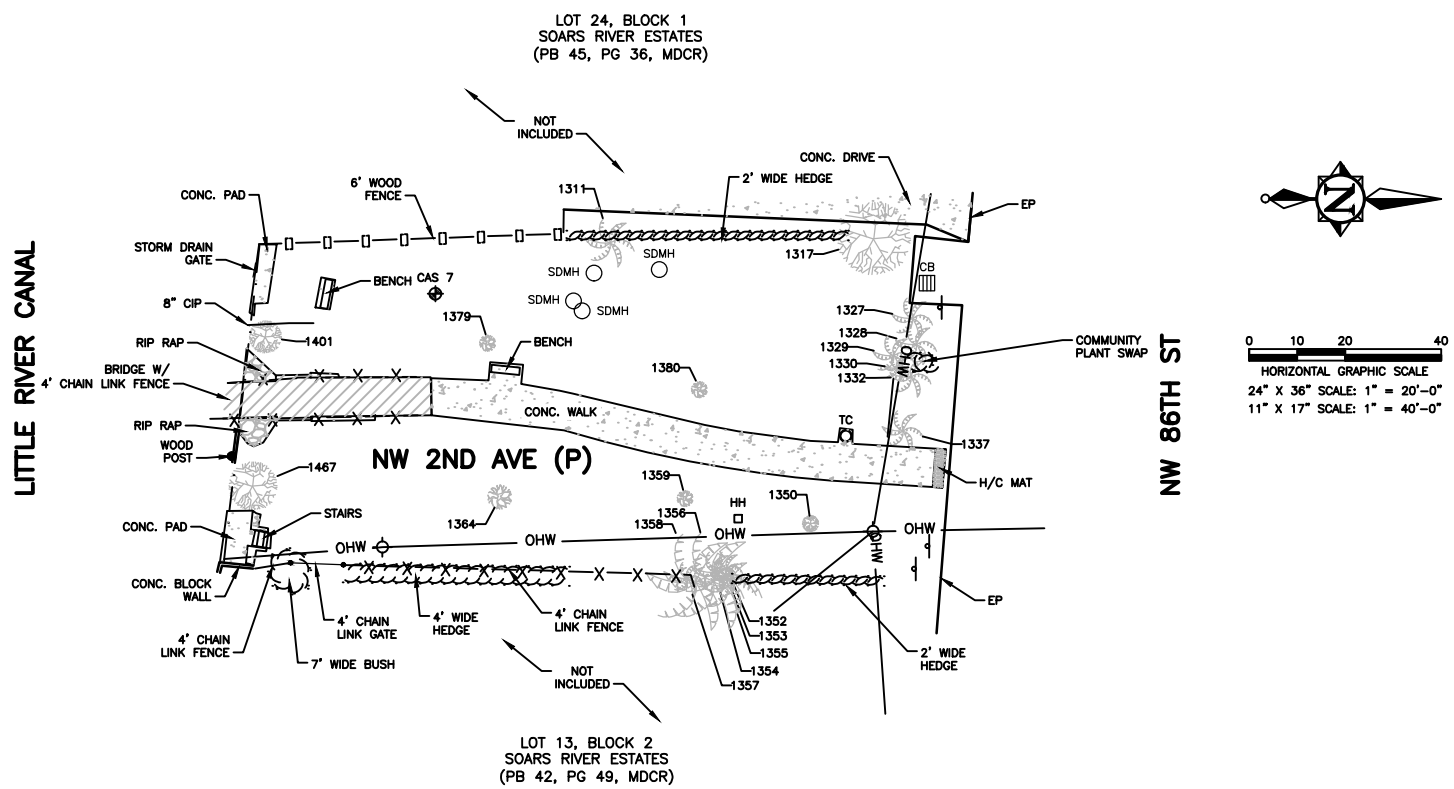
MAP OF
TOPOGRAPHIC SURVEY

VILLAGE PARK PROJECTS

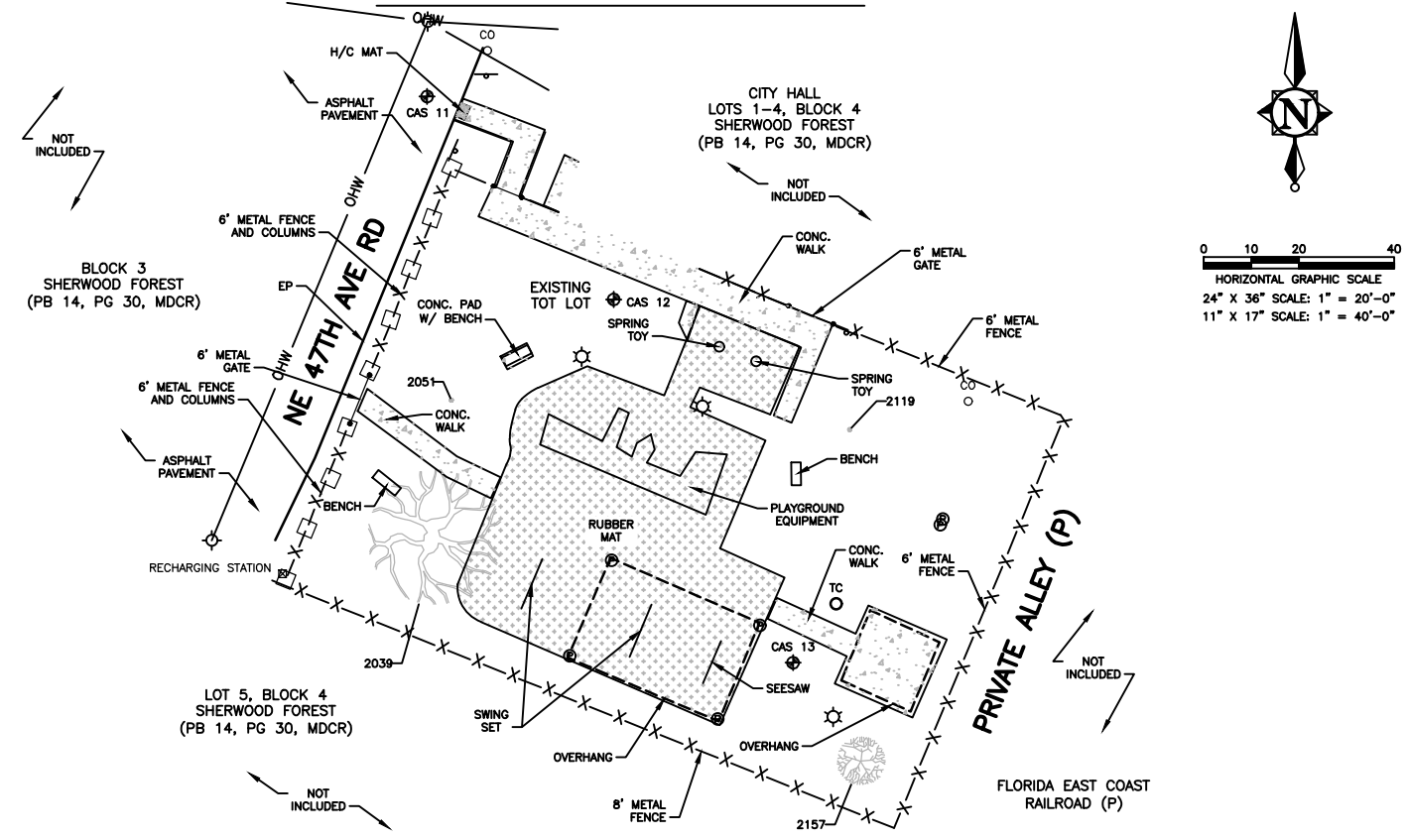
FILE NAME: 20-2238-V-02-SRVY.dwg
LAST SAVED: 01/26/22 - 1:47pm
CAS PROJECT NUMBER
21-2238

SHEET
V-02
OF
04

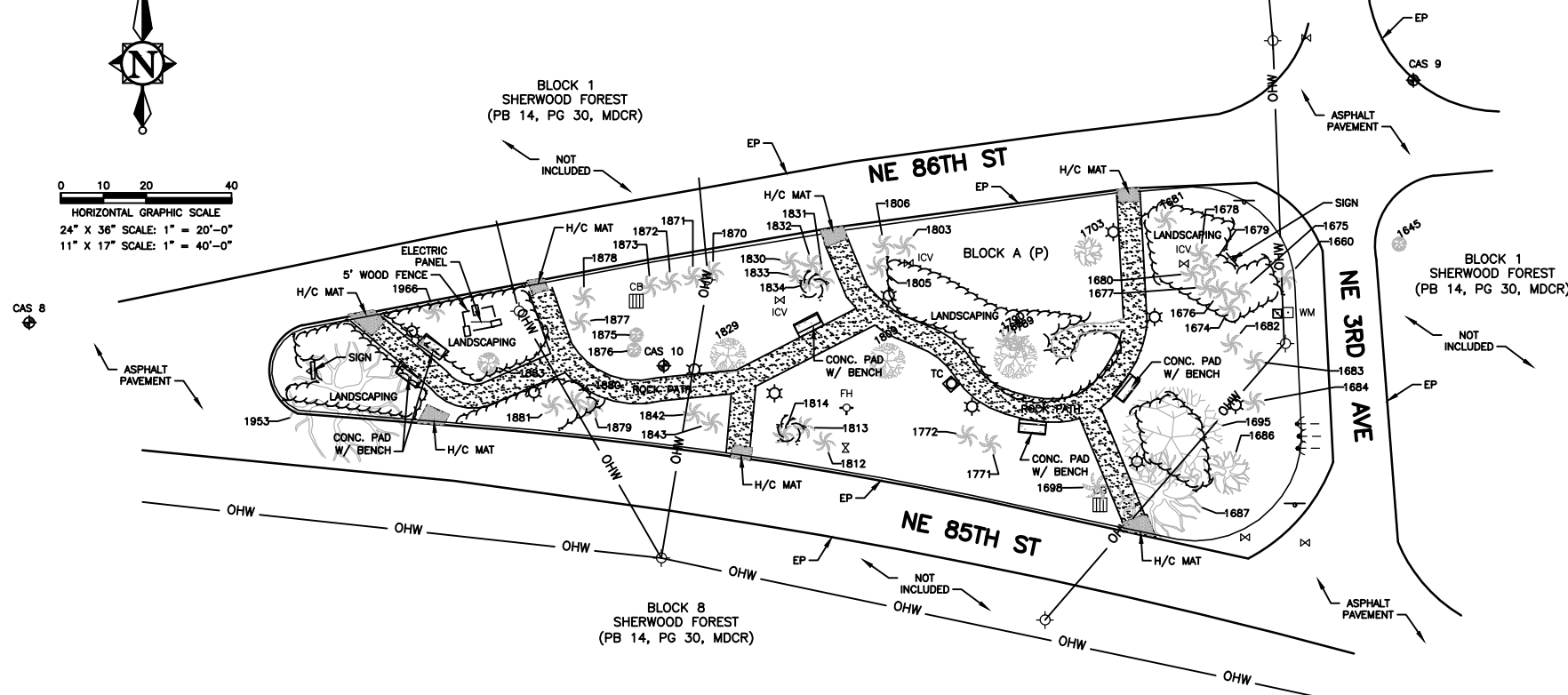
RIVER ESTATES PARK



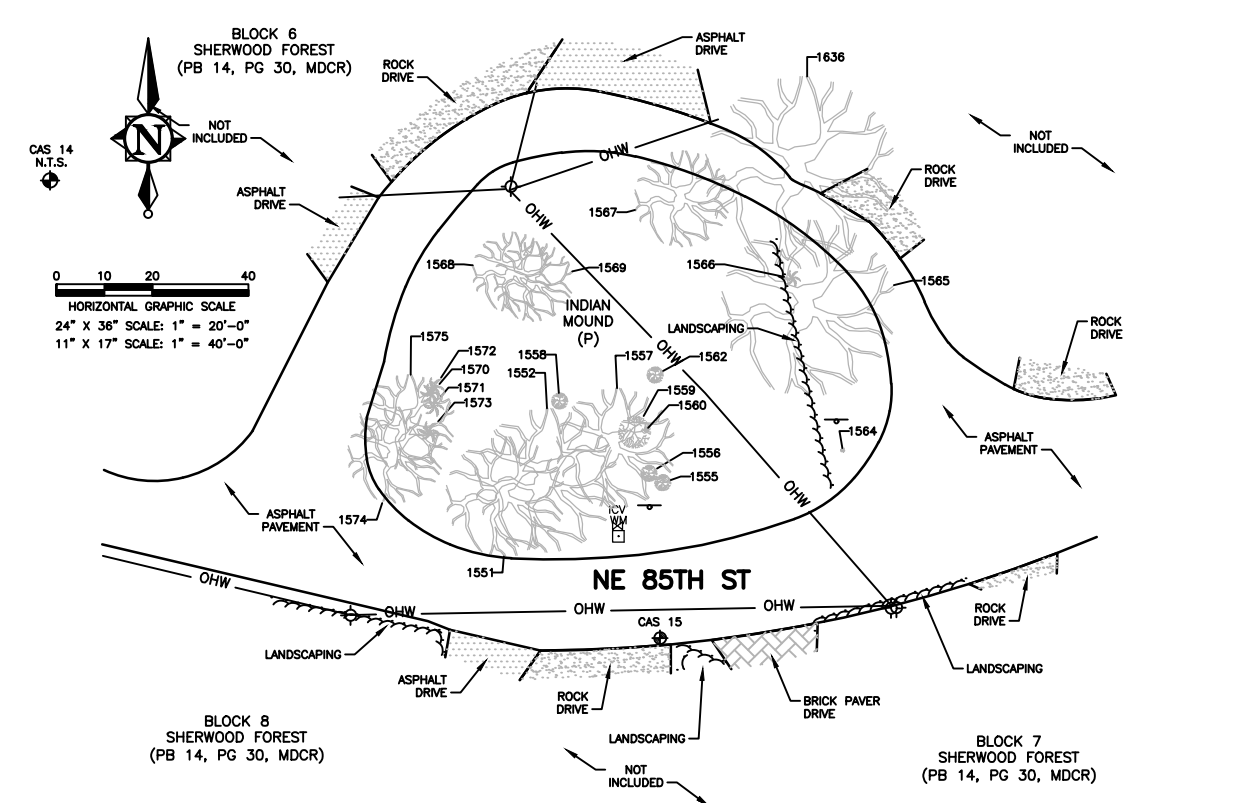
VILLAGE TOT LOT



SHERWOOD FOREST INDIAN MOUND



TEQUESTA INDIAN MOUND



P:\Cities_Villages_Towns\El_Portal\21-2238-Village-Parks-215\PLANS\20-2238-V-03-SRVY.dwg, Wed Jan 26 15:59:26 2022, mlavella, 1:2

NO.	DATE	FB / PG	DWN	REVISION	CKD
1	01/24/22	1939/17	MRL	MAP OF TOPOGRAPHIC SURVEY	RDK

PREPARED FOR
VILLAGE OF EL PORTAL

CRAIG A. SMITH & ASSOCIATES
CONSULTING ENGINEERS-PLANNERS-SURVEYORS
21045 COMMERCIAL TRAIL
BOCA RATON, FLORIDA 33486
(561) 314-4445
CERTIFICATE NO. LB0003110

MAP OF
TOPOGRAPHIC SURVEY

VILLAGE PARK PROJECTS

FILE NAME: 20-2238-V-03-SRVY.dwg
LAST SAVED: 01/26/22 - 8:33am
CAS PROJECT NUMBER
21-2238

SHEET
V-03
OF
04

TREE TABLE	
TREE NUMBER	TYPE AND SIZE
1025	TRGN 36"
1065	TRPL 12"
1066	TRGN 8"x4
1068	TRGN 46" DIA CLUSTER
1089	TRO 4"
1097	TRGN 6"
1118	TRGN 34"
1120	TRPL 24"
1126	TRGN 3"
1139	TRPL 20"
1140	TRPL 4"
1142	TRGN 18"
1144	TRPL 24"
1145	TRPL 24"
1146	TRGN 6"x4
1147	TRGN 18"x2
1160	TRGN 12" DIA
1161	TRGN 12" DIA
1165	TRGN 10" DIA
1167	TRPL 24" X2

TREE TABLE	
TREE NUMBER	TYPE AND SIZE
1168	TRGN 3"
1169	TRO 3"x2
1170	TRO 3"x2
1171	TRPL 3"x2
1172	TRPL 4"
1173	TRPL 3"x2
1176	TRGN 3"
1177	TRPL 3"
1178	TRGN 3"
1179	TRGN 3"
1182	TRPL 24"
1187	TRPL 3"
1196	TRGN 3"
1207	TRGN 18"
1213	TRGN 3"
1216	TRGN 7"
1230	TRGN 8"x2
1231	TRPL 20"
1232	TRGN 4"
1233	TRGN CLUSTER 3' W

TREE TABLE	
TREE NUMBER	TYPE AND SIZE
1255	TRPL 24"
1256	TRPL CLUSTER 6' DIA
1275	TRGN 4' DIA
1289	TRGN 10' DIA
1311	TRPL 12"
1317	TRGN 18"
1327	TRPL 10"
1328	TRPL 10"
1329	TRPL 10"
1330	TRPL 6"
1332	TRPL 10"
1337	TRPL 10"x2
1350	TRGN 4"
1352	TRPL 8"
1353	TRPL 8"
1354	TRPL 10"
1355	TRPL 14"
1356	TRPL 24"
1357	TRPL 8"
1358	TRPL 24"

TREE TABLE	
TREE NUMBER	TYPE AND SIZE
1359	TRO 4"
1364	TRO 6"
1379	TRO 4"
1380	TRO 4"
1401	TRGN CLUSTER 8"
1467	TRGN CLUSTER 12' DIA
1551	TRO 30"
1552	TRO 36"
1555	TRGN 4"
1556	TRGN 4' CLUSTER
1557	TRO 30"
1558	TRGN 4"
1559	TRGN 8"
1560	TRGN CLUSTER 4' DIA
1562	TRGN 4"
1564	TRPL DEAD 8"
1565	TRO 44"
1566	TRPL 4"
1567	TRO 24"
1568	TRO 20"

TREE LEGEND

TRGN = GENERIC TREE
TRO = OAK TREE
TRPL = PALM TREE
10IN = TREE SIZE (ABH)

TREE NOTES

1. TREE SIZES SHOWN HERON WERE MEASURED AT BREAST HEIGHT (ABH)
2. TREE TYPES SHOWN ARE THE COMMON NAMES TO THE BEST OF THE CREW LEADER'S KNOWLEDGE
3. TREE NUMBERS SHOWN ARE PER SURVEY POINT NUMBER AND ARE NOT CONSECUTIVE

TREE TABLE	
TREE NUMBER	TYPE AND SIZE
1569	TRO 20"x2
1570	TRPL 5"
1571	TRPL 5"
1572	TRPL 5"
1573	TRPL 5"
1574	TRO 24"
1575	TRO 24"
1636	TRO 48IN
1645	TRGN 4' W
1660	TRPL 6"
1674	TRPL 6"
1675	TRPL 6"x3
1676	TRPL 6"x3
1677	TRPL 6"x3
1678	TRPL 6"x3
1679	TRPL 6"
1680	TRPL 6"
1681	TRPL 6"
1682	TRPL 6"
1683	TRPL 6"

TREE TABLE	
TREE NUMBER	TYPE AND SIZE
1684	TRPL 6"
1686	TRO 12"
1687	TRO 24"
1695	TRGN 28"
1696	TRPL 8"x2
1703	TRO 8"
1771	TRPL 6"x4
1772	TRPL 6"x4
1788	TRGN 12"
1789	TRPL 8"
1790	TRPL 6"
1803	TRPL 6"x3
1805	TRPL 6"x3
1806	TRPL 6"
1809	TRGN 10"x2
1812	TRPL 6"x3
1813	TRPL 6"
1814	TRPL 6"x3
1829	TRGN 10"
1830	TRPL 6"x3

TREE TABLE	
TREE NUMBER	TYPE AND SIZE
1831	TRPL 6"x3
1832	TRPL 6"
1833	TRPL 4"
1834	TRPL 4"x2
1842	TRPL 6"x3
1843	TRPL 6"x4
1870	TRPL 6"
1871	TRPL 6"
1872	TRPL 6"
1873	TRPL 6"
1875	TRGN 4"
1876	TRGN 4"
1877	TRPL 6"
1878	TRPL 6"x4
1879	TRPL 6"x4
1880	TRPL 6"
1881	TRPL 6" X4
1883	TRGN 6' DIA
1953	TRO 34"
1966	TRPL 6"

TREE TABLE	
TREE NUMBER	TYPE AND SIZE
2039	TRO 34"
2051	TRGN CLUSTER 8' DIA
2119	TRGN CLUSTER 7' DIA
2157	TRGN 12"

NO.	DATE	FB / PG	DWN	REVISION	CKD
1	01/24/22	1939/17	MRL	MAP OF TOPOGRAPHIC SURVEY	RDK

PREPARED FOR
VILLAGE OF EL PORTAL

CRAIG A. SMITH & ASSOCIATES
CONSULTING ENGINEERS-PLANNERS-SURVEYORS


21045 COMMERCIAL TRAIL
BOCA RATON, FLORIDA 33486
(561) 314-4445
CERTIFICATE NO. LB0003110

MAP OF
TOPOGRAPHIC SURVEY

VILLAGE PARK PROJECTS
TREE TABLE

FILE NAME: 20-2238-V-04-TREE.dwg
LAST SAVED: 01/26/22 - 8:35am
CAS PROJECT NUMBER
21-2238

SHEET
V-04
OF
04